

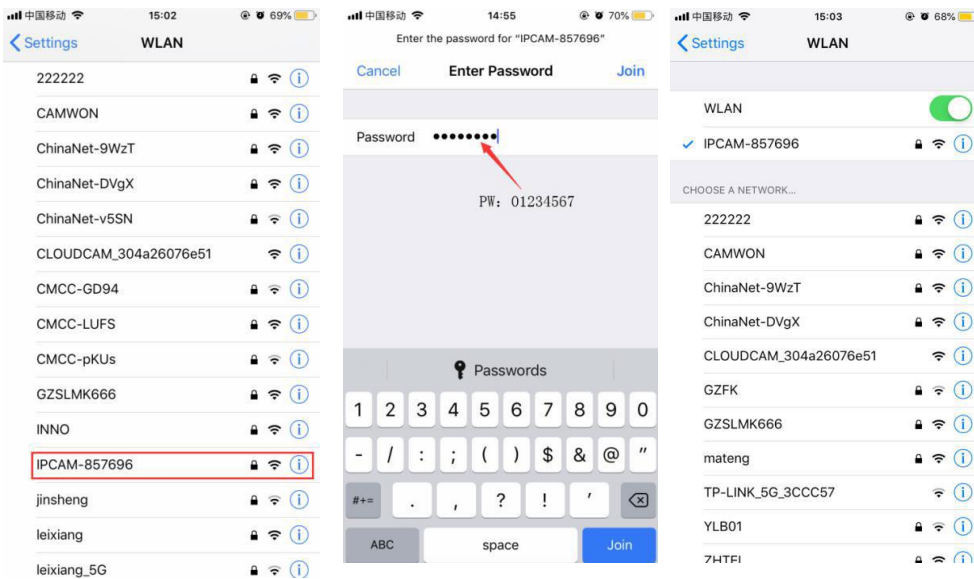
Quick Start Guide

Download APP

- Download app'en **CamHiPro** i App Store eller Google Play.

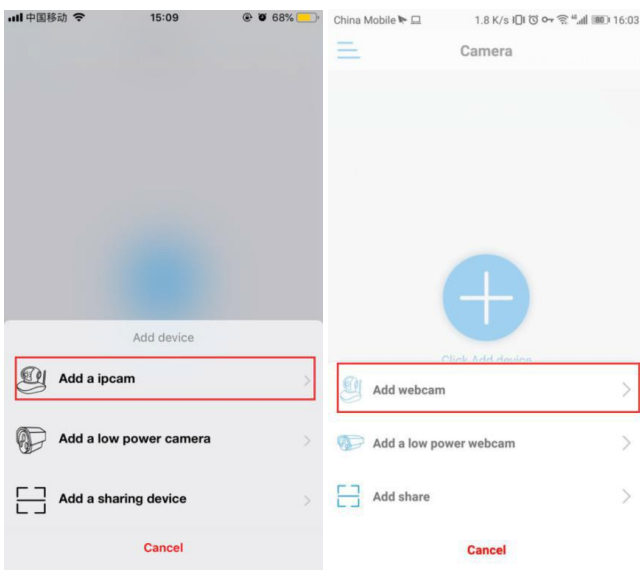
Tilføj kamera til app'en

- Tilslut Wi-Fi antennen til Kamera.
- Tilslut strøm til kameraet.
- Vent 30-60 sekunder, Gå til din telefons Wi-Fi indstillinger og forbind med hotspot (IPCAM-XXXXXX) fra kameraet, indtast koden "01234567" og forbind.



(IOS version)

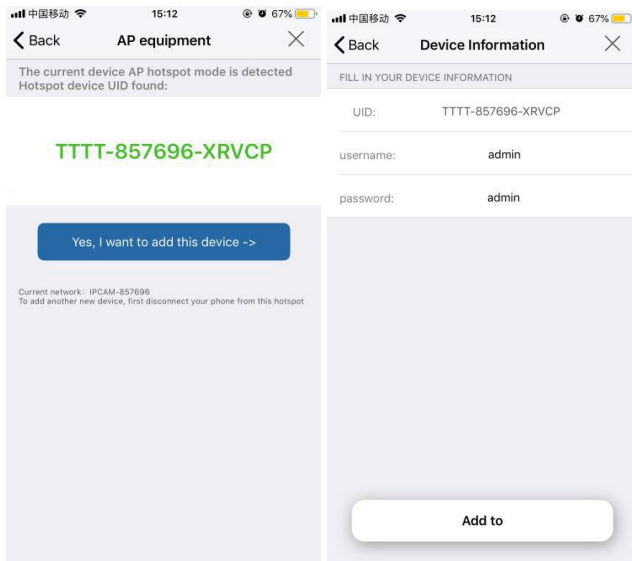
- Åben app'en "CamHiPro", tryk "Add Camera" for at tilføje kameraet.



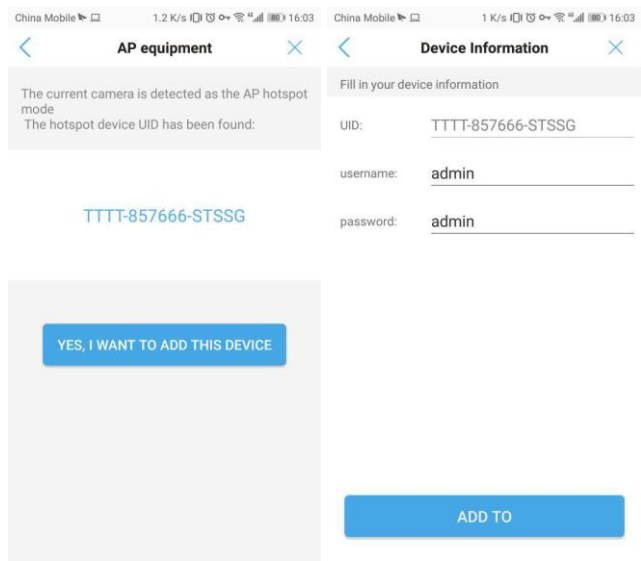
(IOS Version)

(Android Version)

- Når app'en skriver kameraets UID, skal du trykke på "Yes, I want to addt his device" og derefter "Add to".



(IOS Version)



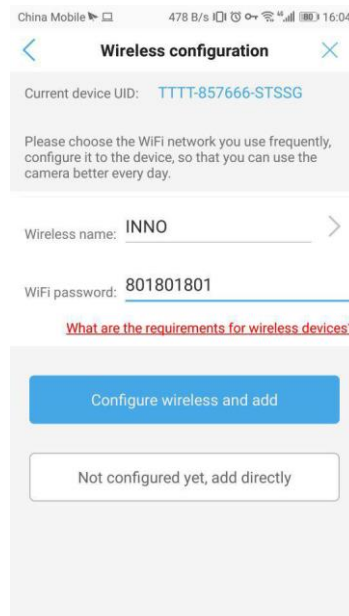
(Android Version)

Wi-Fi forbindelse – forbind med dit eget Wi-Fi netværk, så du også har adgang til kameraet udefra.

- Vælg dit Wi-Fi netværk ved at trykke på pilen.
- Skriv dit Wi-Fi password.
- Tryk "Configure wireless and add".



(IOS Version)

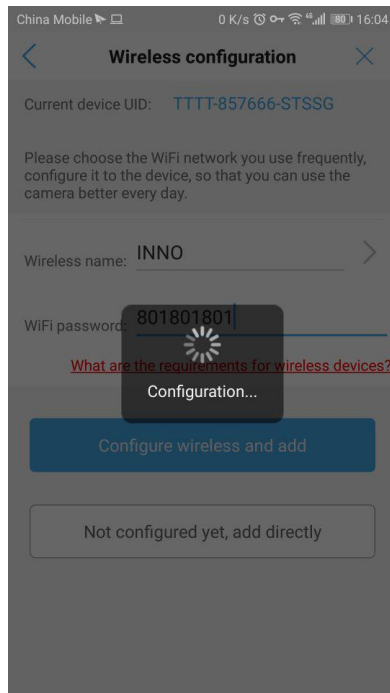


(Android Version)

- Vent 30-60 sekunder, mens kameraet forbinder til dit Wi-Fi netværk.

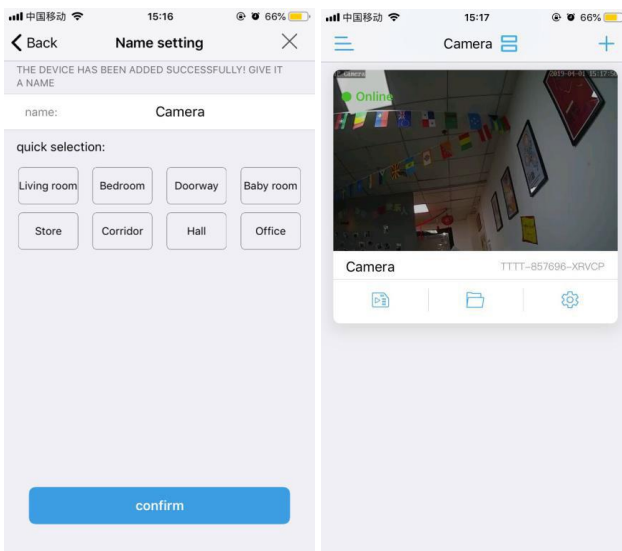


(IOS Version)

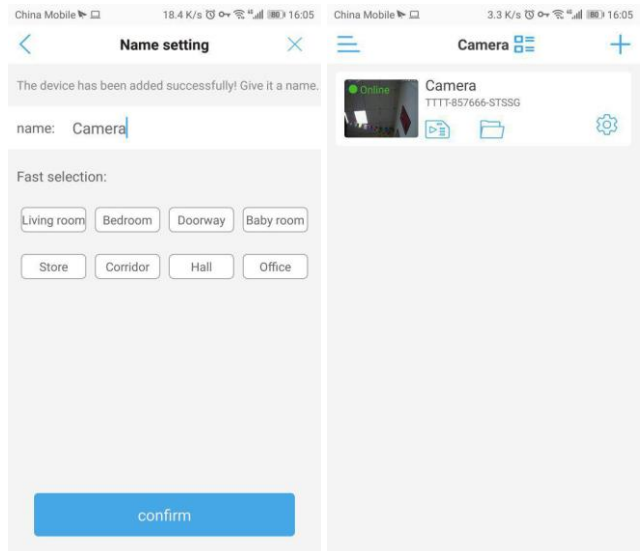


(Android Version)

- Vælg et navn/placering til kameraet.
- Tryk "confirm".
- Kameraet er nu opsat.



(IOS Version)



(Android Version)